

Human CD155/PVR Protein

Cat. No. CD1-HM255

Description

Source	Recombinant Human CD155/PVR Protein is expressed from HEK293 with hFc tag at the C-Terminus. It contains Trp21-Asn343.
Accession	P15151-1
Molecular Weight	The protein has a predicted MW of 61.8 kDa. Due to glycosylation, the protein migrates to 75-100 kDa based on Tris-Bis PAGE result.
Endotoxin	Less than 1EU per μg by the LAL method.
Purity	> 95% as determined by Tris-Bis PAGE

Formulation and Storage

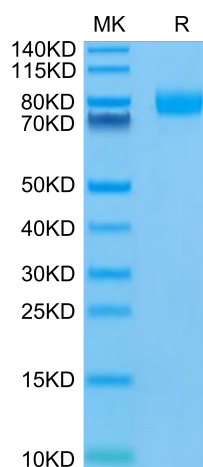
Formulation	Lyophilized from 0.22 μm filtered solution in PBS (pH 7.4). Normally 8% trehalose is added as protectant before lyophilization.
Reconstitution	Centrifuge the tube before opening. Reconstituting to a concentration more than 100 $\mu\text{g}/\text{ml}$ is recommended. Dissolve the lyophilized protein in distilled water.
Storage	-20 to -80°C for 12 months as supplied from date of receipt. -80°C for 3-6 months after reconstitution. 2-8°C for 2-7 days after reconstitution. Recommend to aliquot the protein into smaller quantities for optimal storage. Please minimize freeze-thaw cycles.

Background

CD155 is a cell surface adhesion molecule functioning in tumor cell migration, invasion, and metastasis, and not surprisingly, is also designated as a common tumor-associated antigen. CD155 is also recognized by NK cells to induce their cytotoxicity. CD155 is also commonly referred to as the "poliovirus receptor," or PVR.

Assay Data

Tris-Bis PAGE

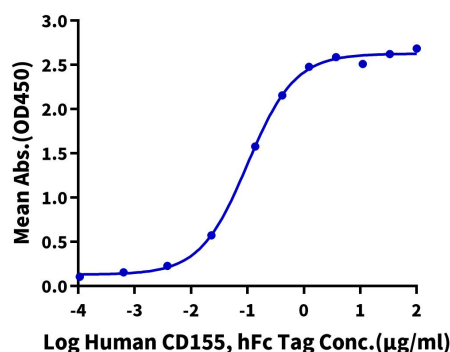


Human CD155 on Tris-Bis PAGE under reduced condition. The purity is greater than 95%.

ELISA Data

Human CD155, hFc Tag ELISA

0.05 μg Human TIGIT, His Tag Per Well

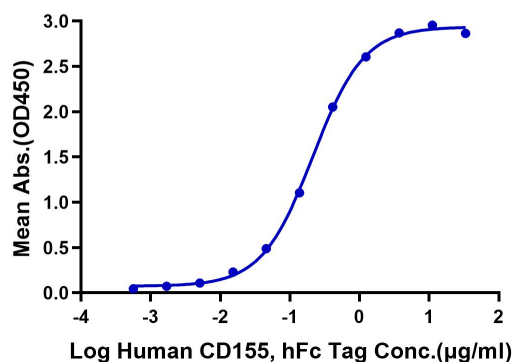


Immobilized Human TIGIT, His Tag at 0.5 $\mu\text{g}/\text{ml}$ (100 $\mu\text{l}/\text{Well}$) on the plate. Dose response curve for Human CD155, hFc Tag with the EC50 of 0.1 $\mu\text{g}/\text{ml}$ determined by ELISA (QC Test).

Assay Data

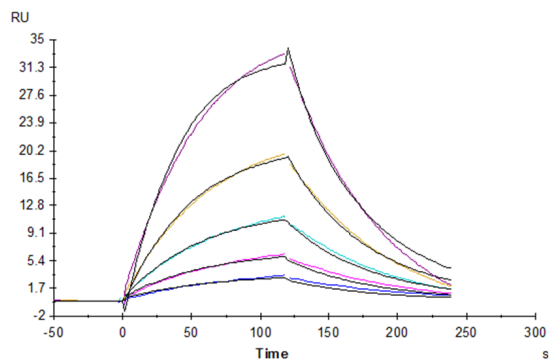
ELISA Data

Human CD155, hFc Tag ELISA
0.5µg Human CD96, mFc Tag Per Well



Immobilized Human CD96, mFc Tag at 5µg/ml (100µl/Well) on the plate. Dose response curve for Human CD155, hFc Tag with the EC50 of 0.21µg/ml determined by ELISA.

SPR Data



Human CD155, hFc Tag captured on CM5 Chip via Protein A can bind Human CD96, His Tag with an affinity constant of 0.958 µM as determined in SPR assay (Biacore T200).